

1. PERFORMANCE

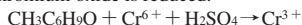
- 1) Measuring range : 2-100 ppm
Number of pump strokes : 3 (300ml)
- 2) Sampling time : 4.5 minutes/3 pump strokes
- 3) Detectable limit : 1 ppm
- 4) Shelf life : 2 years
- 5) Operating temperature : 0 ~ 40 °C
- 6) Temperature compensation : Necessary (See "TEMPERATURE CORRECTION TABLE")
- 7) Reading : Direct reading from the scale calibrated by 3 pump strokes
- 8) Colour change : Yellow → Pale blue

2. RELATIVE STANDARD DEVIATION

RSD-low : 10% RSD-mid. : 10% RSD-high : 5%

3. CHEMICAL REACTION

Chromium oxide is reduced.



4. CALIBRATION OF THE TUBE

GAS CHROMATOGRAPHY

5. INTERFERENCE AND CROSS SENSITIVITY

Substance	Interference	Coexistence
Aliphatic hydrocarbons (more than C ₃)	Whole reagent is changed to Pale brown.	The accuracy of readings is not affected.
Aromatic hydrocarbons	∕	∕
Halogenated hydrocarbons	∕	∕
Alcohols	FIG.1 Similar stain is produced.	Higher readings are given.
Esters	Pale ringed stain is produced near the bottom of the reagent.	The accuracy of readings is not affected.

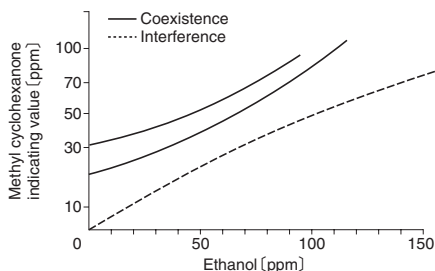


FIG.1 Influence of Ethanol

TEMPERATURE CORRECTION TABLE

Tube Readings (ppm)	Corrected Concentration (ppm)				
	0 °C (0°F)	10 °C (50°F)	20 °C (68°F)	30 °C (86°F)	40 °C (104°F)
100	—	130	100	80	66
80	130	105	80	65	52
60	100	80	60	48	36
40	68	54	40	30	22
20	35	26	20	14	10
10	18	14	10	7	5
2	3	3	2	1	1